

# Primer GS

Insulating and strengthening primer with high penetration, based on synthetic micro-resins for gypsum, anhydrite and cement-based substrates, for indoor and outdoor application.



## Fields of application:

- for strengthening brittle screeds crumbling on the surface also with floor heating or cooling;
- for strengthening brittle renders crumbling on the surface;
- for insulating gypsum renders or screeds;
- for insulating anhydrite screeds also with floor heating or cooling;
- to lock surface and interstitial dust in cement-based screeds;

- for adjusting the absorption rate of the application substrates, avoiding the rapid drying of self-levelling products and smoothing plasters;
- compatible with every type of cement-based adhesives or mortars;
- professional use only;

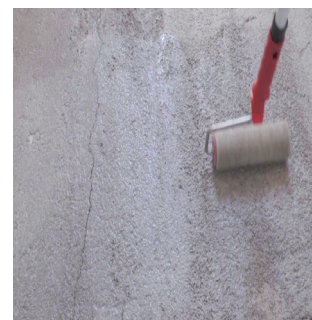
## Preparation:

the base must be sound, compact, well set, have no parts coming away, and be free of dust, grease, oil, paint, and wax. The base must be dry and well established. Provide the laying surface with protection from direct sunlight beforehand. Any splits or cracks must be sealed using **Eposan**.

## Application:

### Application as an adhesion-promoting primer:

on very porous cementitious bases, use a brush or roller to apply Primer GS diluted with water with a mixing ratio of 1:1 or 1:2 depending on absorption rate (the more porous the base is, the less the primer needs to be diluted). Spread evenly to prevent build-ups and layers forming. Proceed with laying or smoothing before the Primer GS is dry. For use as an adhesion-promoting coat for plaster/render: use a brush or spray to apply Primer GS bediluted with water with a mixing ratio of 1:2.



## Quality and Environmental Standards:

**Primer GS** undergoes constant, careful testing at our laboratories, in compliance with the legislation in force - UNI EN ISO 9001/2015.

## Warning

- do not use in areas subject to rising damp;
- do not overapply and, if necessary, dilute with water in accordance with the absorption rate of the base, to prevent if forming layers and a surface film;
- do not apply to unstable woods in a damp environment;
- while considerably reducing the absorption of the materials to which it is applied, Primer GS should not be considered and used as a waterproofing treatment;
- do not apply in temperatures below + 5°C.

## Technical and application specifications

Hazard classification as per Directive 99/45/EC: **none**

Waiting time before smoothing or applying materials: **approx. 3 hours**

Application temperature: **from +5°C to +35°C**

### FINAL PERFORMANCE SPECIFICATIONS

Resistance to damp, solvents, oil, alkalis, ageing: **excellent**

Harmonised customs code: **39039000**

Measurement of data at 23°C/50% Residual Humidity and no ventilation.  
The data may be considerably modified by the conditions of use.

Characteristics	Application methods	Consumption
Water based Ready-for-use High penetration Strengthening For indoor and outdoor application	Flat brush Roller Spraying	150-200 gr/m <sup>2</sup> depending on the substrate absorption
		<b>Storage</b> Shelf life of 24 months in the original packages at temperatures above +5°C; do not expose to direct sunlight

Code	Product	Form and color	Packages	Pallet
450001	Primer GS	White liquid	1 kg	240 kg
450005	Primer GS	White liquid	5 kg	450 kg
450010	Primer GS	White liquid	10 kg	600 kg
450025	Primer GS	White liquid	25 kg	450 kg